

bLOW UP!

For bass clarinet, percussion and viola

deniz caglarcan (1992*)

21april2017/11.30am/ankara

Blow Up! (2017)

for bass clarinet, viola and percussion

INSTRUMENTATION

Bass Clarinet

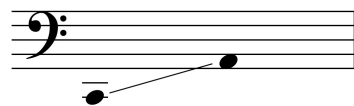
Viola

Percussion

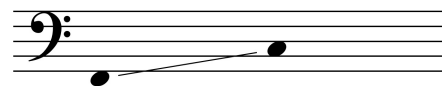
Tubular Bells


Vibraphone

Timpano I (C²-A²) — A china cymbal is placed face up.

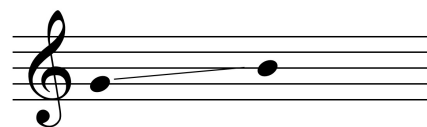


Timpano II (F²-C³)



Bass drum — Four objects are placed faced down small cymbal, an F³  crotale, high woodblock, one slab of wood.

Crotales









Tam-tam

The score is transposed. (Bass clarinet sounds a M9 lower, crotales sound two octaves higher)




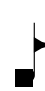

Duration: app. 6 minutes

PERFORMANCE INSTRUCTIONS

GENERAL





-  : quarter-tone flat
-  : quarter-tone sharp
-  : This is a parameter for pressure, achieve the crescendo by applying more pressure
-  : This is a parameter for pressure, gradually remove the pressure.
-  : Over-pressure for the indicated notes. No gradual movement
-  : Abruptly stop an explosive crescendo. The resulting effect should resemble a normal sound played backwards on a tape.

BASS CLARINET





-  : Key clicks with audible notes.
-  : Key-click without audible notes.
-  : Produces wind sound by breathing in.
-  : Produces wind sound by breathing out.
-  : Slap tone

VIOLA

Viola is prepared with a paperclip on the C and D strings. Attach a large metal paperclip 5 cm from the bridge.

-  : Half filled diamond noteheads indicate very light left hand pressure (between normal playing and harmonics) as well as light bow pressure.
-  : Very slow bow which produce rhythmic cracking sound on the string.
- s..t.* : Play between fingerboard and paperclip.
- ord.* : Play between paperclip and bridge.
-  : This indicates that, viola player should use so much pressure on string that only enables on single percussive sound audible.
-  : Left hand tapping

PERCUSSION


-  : Superball. Cut the superball into two and attach it onto a Chinese skewer
-  : Try to maintain single pitch. To achieve this, play the superball around the corners of instrument.
-  : Try to produce rhythmical and big sounds. To achieve this, play the instrument at the center with more pressure.
-  : Indicates pitch band for vibraphone. To achieve this, one needs a "normal" vibraphone mallet and a hard mallet which is made of hard rubber or plastic mallet head. Rest the hard mallet on a nodal point of a bar, strike the bar with the "normal" mallet, then pressing the hard mallet into the bar and drag it away from the nodal point.

Bass Drum: 4 objects are placed faced down on a medium-sized bass drum. One small cymbal, one crotale, one high woodblock, one slab of wood. There are two technique are used:

*CWBD: Hit all four object simultaneously, always dead stroke.

*WWBD: Hit the woodblock and slab of wood simultaneously, always dead stroke.

TCh: China is placed faced up on timpano I. The pitch can be changed with the pedal. Two different techniques are used.

 : With the back of the mallet, try to sustain a pitch and with left hand search for a right place to produce a pitch.

*Arco: choosing an appropriate place to hold the china helps produce a single pitch, at the same time play the chain with a bow.

Blow Up!

for bass clarinet, percussion and viola

Deniz Çağlarcan (*1992)

♩ = 56

Bass Clarinet

Percussion

Viola

Tubular Bells

Vibraphone

Timpano II

I.v.

III and IV strings are prepared with a paperclip

III

IV

f

ff

mf

ff

mf

ff

B. Cl.

Perc.

Vla.

CWBD

Timpano II

Sing (notated in B♭)

7

mf

f

ff

mf < *ff* > *mf* *ff*

sffz

f

ff

f

ff

III

IV

3

V

I.v.

take

14

B. Cl. *mp* *mf* *f* *mp* *f* *mf* *ff*

Vibraphone *arco* l.v. TCH l.v. Timpano II *mp* *f* *mf* *ff*

IV s.t. III 3 s.t. ord. *mp* *mf* *sfz* *mf* *sfz*

18

B. Cl. *ff* *f*

Tubular Bells l.v. Crotales l.v. l.v. l.v. l.v. Tubular Bells l.v. *f* *f* *f* *f* *f*

III Punta d'arco IV Tremolo con crini *ff* *f*

23

B. Cl.

Perc.

Vla.

7

6

Timpano II

Crotales

Tubular Bells

CWBD

Crotales

ff

mf

f

mp

mf

f

mp

sfz

mp

f

f

f

ff

f

f

p

ff

28

B. Cl.

Perc.

Vla.

Tamtam

mf

mp

mf

f

f

mf

mf

mp

mp

p

32

B. Cl.

Perc.

Vla.

TCH

I.v.

p *mf* *f* *sfz* "ff"

36

B. Cl.

Perc.

Vla.

Tamtam

Timpano II

(tapping) *f* *arco* (tapping) *mf* "ff" *mf*

39

B. Cl. *f p "ff" p* *f* *f < ff* *f < ff* *p* *mp*

Perc. *f* *f* *ff* *p* *mp*

Vla. *mf* *f < "ff" > f < ff* *ff* *p* *mp*

10

TCH

l.v.

accel.

accel.

♩ = 112

44

B. Cl. *mf* *f* *ff* *fff* *fff*

Perc. *mf* *f* *ff* *fff* *fff* *mf < ff*

Vla. *mf* *f* *mf* *ff* *f < fff* *fff*

a tempo

Tubular Bells

6

50

B. Cl.

Perc.

Vla.

fff *p*

CWBD

TCH

Timpano II

TCH

fff *mf* *ff* *mf*

fff *p*

al tallone

54

B. Cl.

Perc.

Vla.

fffz

fffz

pp

p *mp* *mp* *p* *mp*

Vibraphone

mf *mf* *mf* *mf* *mf*

remove harmonic

fffz pp

mp *mp* *p* *mp*

58

B. Cl. *mp* *mf* *mp* *f* *mf* *f* *f*

Perc. *f* *f* *f* *f* *f* *f* *mf* *p*

Vla. *mf* *f* *p* *pp* *mf* *ff*

WWBD

Timpano II

m.s.t. → ord.

63

B. Cl. *subito p* *mf* *mp* *ff* *sfz* *sfz* *ff* *sfz* *f* *sfz*

Perc. *sfz* *mf* *mf* *f* *f* *p* *f*

Vla. *subito p* *mf* *p* *mf* *mp* *mf* *p* *mf*

CWBD

Vibraphone *arco*

TCH

Tubular Bells

TCH

IV s.t.

l.v.

76

B. Cl. *mp* *ff* breath noise only

Perc. *mp* *mf* *f* Woodblock Timpano II Sponge *ff* *ff*

Vla. *ff*

81

B. Cl. *sfz*

Perc. *f* *fff*

Vla. Play on ear tuners *sfz*